



## NASHVILLE-DAVIDSON COUNTY STRATEGIC PLAN FOR SIDEWALKS AND BIKEWAYS



The WalknBike plan will improve walking and biking in Nashville, connecting people to opportunity on a network of high-quality, comfortable, and safe sidewalks and bikeways.



**Metro-Nashville**  
**Public Works**  
Improving the Quality of Life for Nashvilleans and our Visitors

# Project Steering Committee



## PROJECT MANAGER:

**Jason Radinger**

WalknBike Project Manager, Metro  
Bicycle & Pedestrian Coordinator

## E-MAIL:

[Info@nashvillewalknbike.com](mailto:Info@nashvillewalknbike.com)

The WalknBike's steering committee will be broken into four subcommittees:

1. Outreach and Education
2. Design Practices
3. Policy and Enforcement
4. Prioritization Methodology

These subcommittees will transition into the 6 E's once the plan is complete and implementation starts.



### METRO POLICE

Steve Anderson  
Chief of Police  
John Drake  
Central Precinct commander  
Michael Gilliland  
Lieutenant, Special Operation Division



### METRO TRANSIT AUTHORITY

Steve Bland  
CEO  
Felix Castrodad  
Director of Planning and Grants



### METRO PUBLIC HEALTH

Tracy Buck  
Director, Prevention and Wellness Division  
Dr. Bill Paul  
Director  
John Vick  
Division of Epidemiology and Research



### METRO PUBLIC WORKS

Mark Macy  
Director



### METRO PLANNING

Adams Carroll  
MPO Regional Active Mobility Planner  
Doug Sloan  
Executive Director



### METRO GENERAL SERVICES

Laurel Creech  
Sustainability Manager  
Nancy Whittmore  
Director  
Bridget Galvin  
Support Specialist  
Jerry Hall  
ADA Coordinator



### METRO PARKS AND RECREATION

Shain Dennison  
Assistant Director, Greenways and Open Space Division  
Cindy Harrison  
Project Manager  
Tommy Lynch  
Director



### METRO LEADERSHIP

Angie Henderson  
Metro Councilmember, District 34  
Mary Beth Ward  
Transportation and Sustainability Manager, Mayor's Office



### NASHVILLE AREA METROPOLITAN PLANNING ORGANIZATION

Rochelle Carpenter  
Senior Policy Analyst  
Michelle Lacewell  
Deputy Director  
Michael Skipper  
Executive Director



### CONEXION AMERICAS

Mayra Cervantes  
Marketing and Community Engagement Coordinator



### TENNESSEE DISABILITY COALITION

Kanton Dickerson  
Volunteer



### WALK BIKE NASHVILLE

Dr. Stacy Dorris  
Board Member, Assistant Professor of Pediatrics, Vanderbilt University School of Medicine  
Nora Kern  
Executive Director



### NASHVILLE CIVIC DESIGN CENTER

Gary Gaston  
Executive Director  
Ron Yearwood  
Assistant Director



### BELMONT UNIVERSITY

Debra Gibbs  
Assistant Professor in Occupational Therapy, Council on Aging  
Board Member  
Evan Pandeygraft  
Student



### BARGE CAUTHEN ASSOCIATES

John Gore  
Vice President



### NASHVILLE BICYCLE PEDESTRIAN ADVISORY COMMITTEE

John Harkay  
Healthy Nashville Leadership Council Member  
Mary Pat Teague  
Associate Director, Community, Neighborhood and Government Relations, Vanderbilt University



### SKANSKA

Kristen Hoggle  
Project Manager



### TENNESSEE DEPARTMENT OF HEALTH

Leslie Meehan  
Assistant Director of Primary Prevention



### METROPOLITAN NASHVILLE PUBLIC SCHOOLS

David Proffitt  
Director of Facility Planning and Construction



### NASHVILLE BICYCLE

Keith Rawls  
General Manager



### TENNESSEE DEPARTMENT OF TRANSPORTATION

Jessica Wilson  
Bicycle and Pedestrian Coordinator



### DOWNTOWN PARTNERSHIP

Tom Turner  
President and CEO



### TRANSIT NOW NASHVILLE

Mary Vavra  
Board Member, Senior Landscape Architect/Planner, Lose & Associates

\*Some committee members represent multiple stakeholders

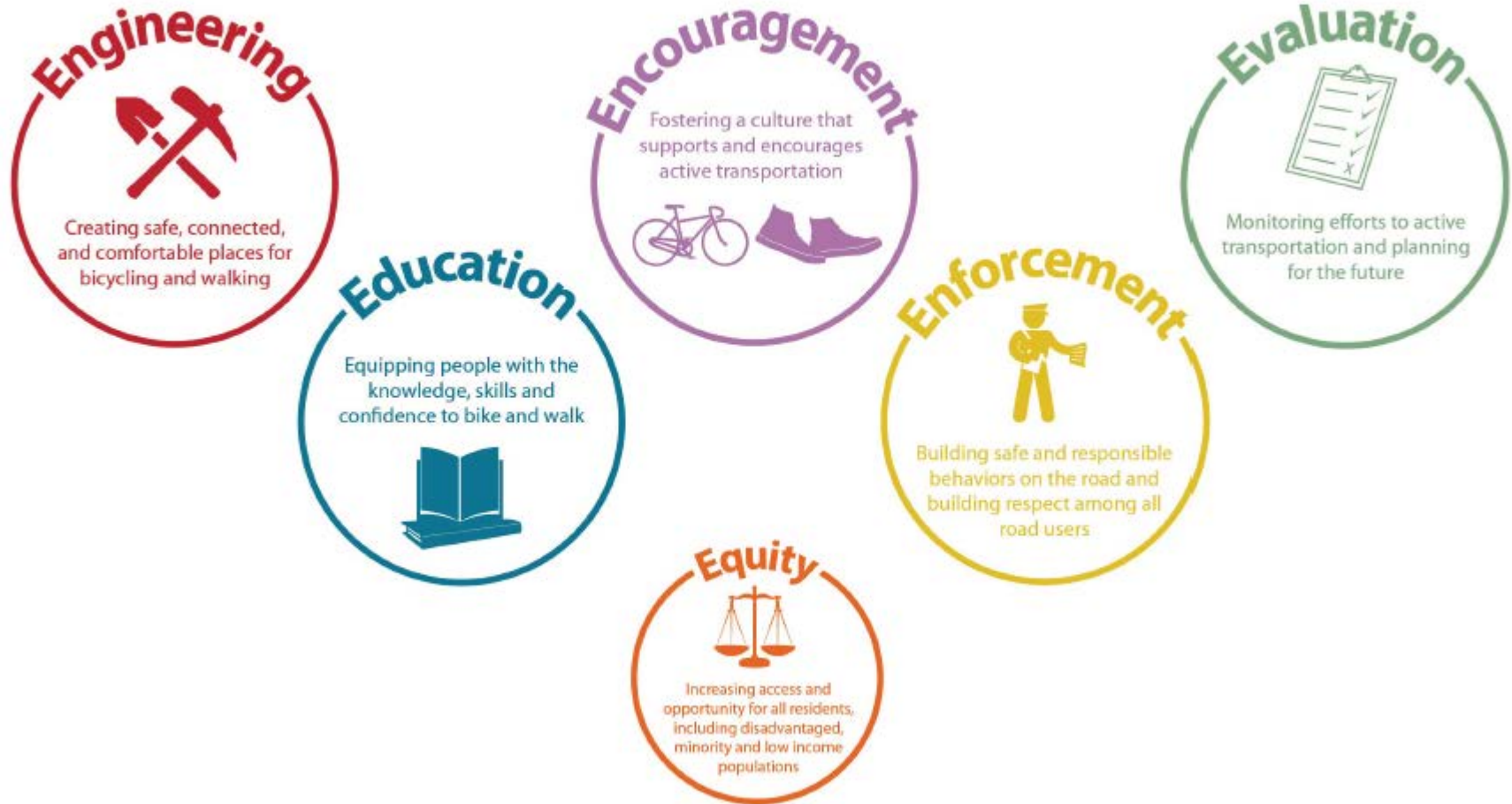
# Metro Coordination



Monthly project team meetings

Combining resources to leverage outreach  
and avoid “meeting fatigue”

# Project Focus





# Project Schedule

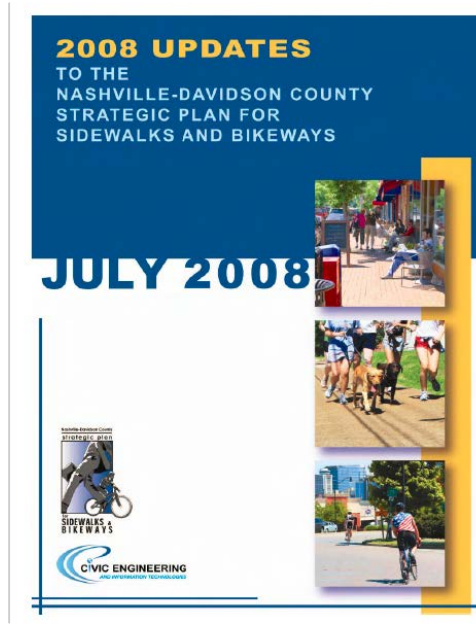
## THE PHASES OF THE PLAN



# Program History



2003



2008



2016

# Program Accomplishments

There are currently 1,100 miles of existing sidewalks in Nashville

## Complete/Green Streets

- 28th/31st Connector (with separated protected bike lane)
- 11th Avenue / Gulch Green Street (with separated protected bike lane)
- Demonbreun Green Street
- Korean Veteran's Blvd (w bike lanes)
- Division Street Connector under construction



*Korean Veterans Blvd*



*28th/31st Connector*

## Nashville b-cycle

Currently 31 stations (41% more stations in January 2016 than in January 2015) and up from original 20 stations in December 2012.



*1st Street*

## Bike Boxes

- Church Street
- Natchez Trace



*Church Street*



*Diagonal crosswalks and pedestrian scramble on Lower Broadway*

## Complete Streets

- 46th Ave North (w BL and buffered bike lanes)
- **0.20 mile** Separated/protected two-way cycle track at Riverfront Park
- **1.8 mile** protected bike lanes along Davidson Street (using flexible bollards)
- **0.47 mi** protected bike lane on Amalie Dr



*11th Avenue Protected Bike Lanes*



*Davidson Street*

There are currently 250 miles of existing bikeways in Nashville



# Program Accomplishments



## NASHVILLE, TN

TOTAL POPULATION

634,464

POPULATION DENSITY

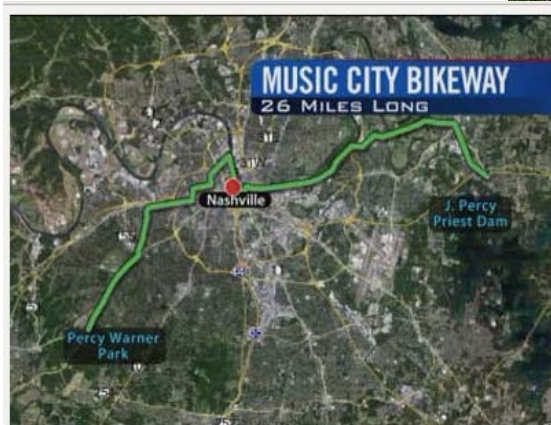
1,258

TOTAL AREA (sq. miles)

504

# OF LOCAL BICYCLE FRIENDLY BUSINESSES

16





# Peer City and Aspirational City Report

"A world-class multi-modal transportation system is essential to a vibrant city and a better quality of life."

– Mayor Berry

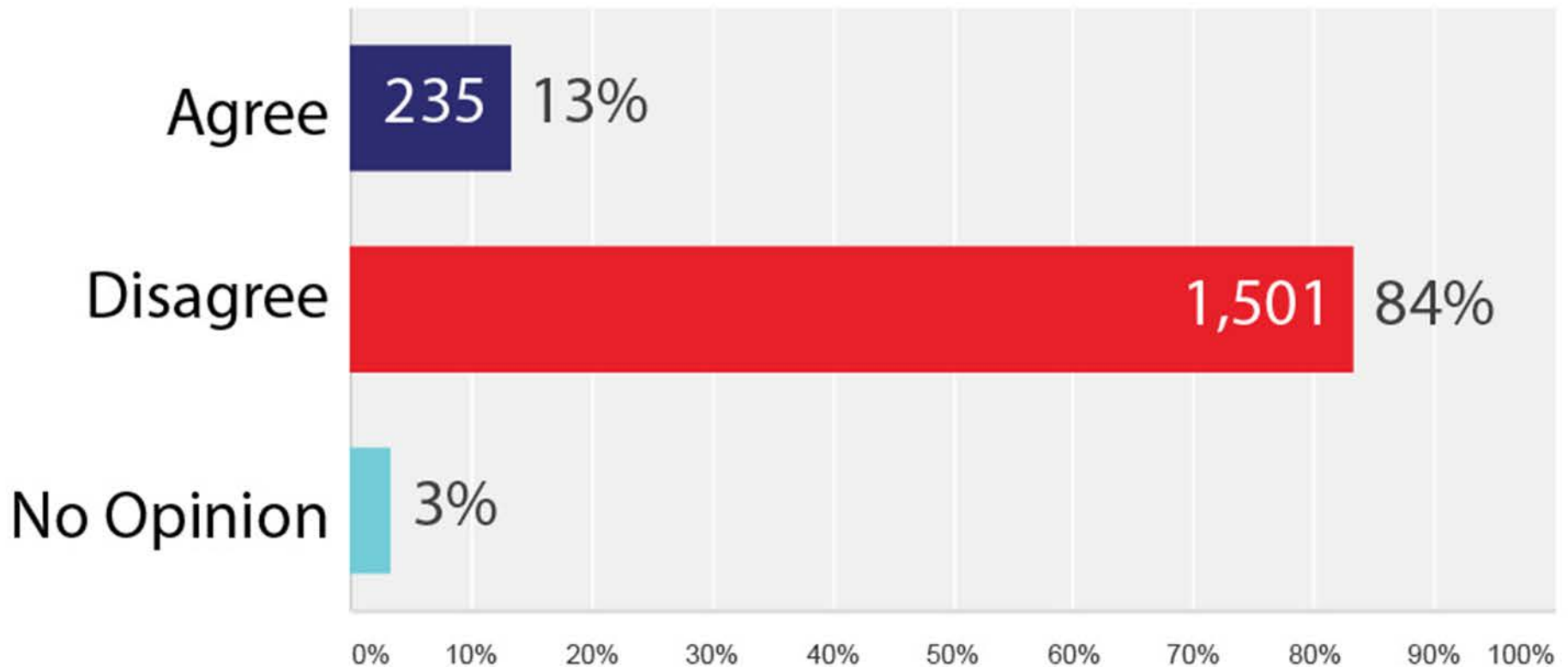
*This peer and aspirational city report was compiled as a resource for Nashville as it develops the 2016 WalkBike Plan. Nashville's record of high quality design, progressive planning and meaningful civic participation prompted the selection of peer and aspirational review cities that have remarkable records of their own with regard to sidewalk and bikeway infrastructure and programming.*

## TABLE OF CONTENTS

<b>Introduction</b>	<b>1</b>
Selection Method	4
Descriptions	4
<b>General Trends &amp; Overarching Themes</b>	<b>6</b>
Dedicated Bicycle and Pedestrian Staffing	8
Funding	9
Pedestrian Planning	15
Bikeway Planning + Inventory	16
Innovative or Transformative Projects	18
<b>Prioritization Methodology</b>	<b>28</b>
New Sidewalk Prioritization Methodology	30
Bikeway Prioritization	34
Conveying Prioritization Process to the Public	36
<b>Policy &amp; Enforcement</b>	<b>38</b>
Sidewalk Maintenance	40
Bikeway Maintenance	46
Sidewalk Requirements for New Development	42
Bikeway Requirements for New Development	43
Access During Construction	45
<b>Outreach &amp; Education</b>	<b>48</b>
Pedestrian/Bikeway Advisory Council	50
Local Nonprofits and Advocacy Groups	51
Program Implementation	51
Bike Share	52
Bike & Pedestrian Programs	53
Vision Zero Commitments	56
<b>Design Practices</b>	<b>58</b>
Bikeway Implementation	61
Design and Construction Forces	62
Complete Streets	63
Tactical Urbanism	64
<b>Appendix</b>	<b>X</b>

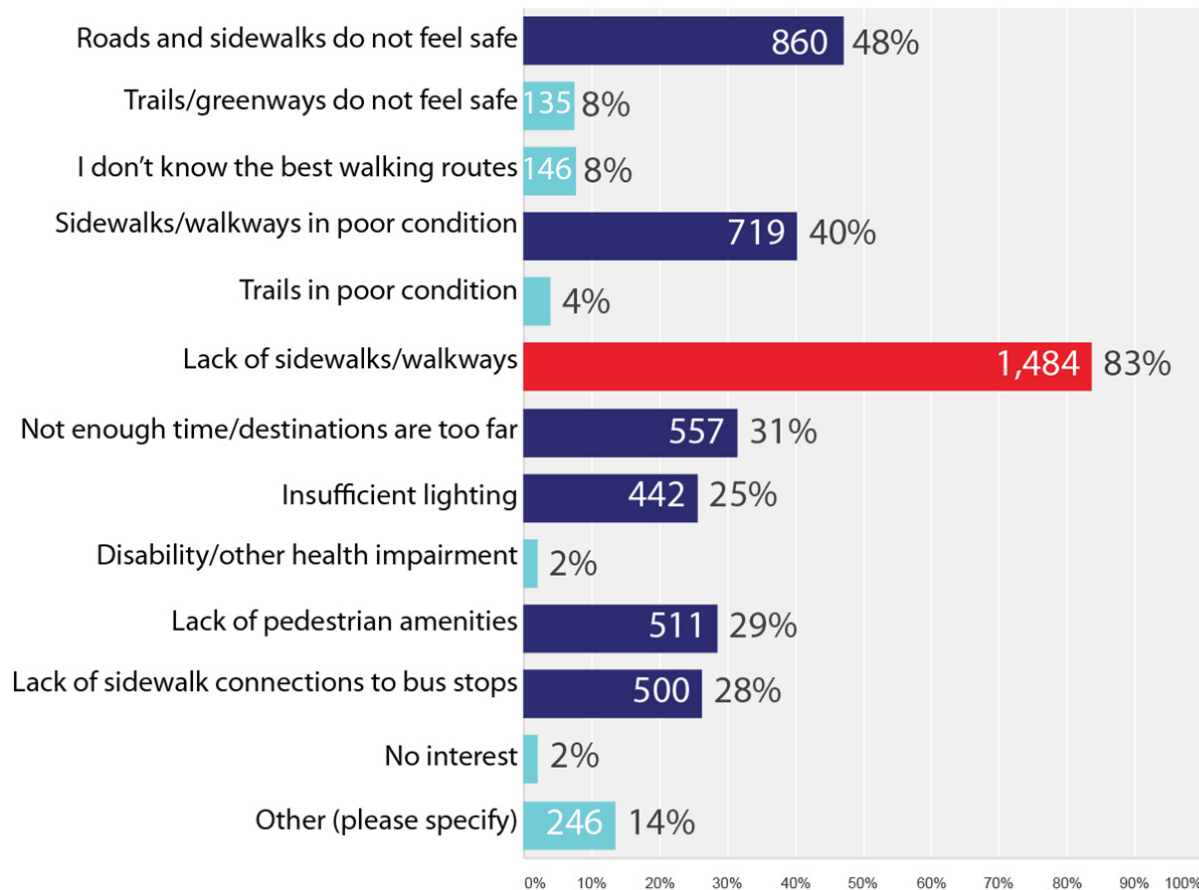
# What We Heard from Survey #1 (1,855 Respondents)

“In Nashville, walking is a safe, convenient, and practical way to get from one place to another”



# What We Heard from Survey #1 (1,855 Respondents)

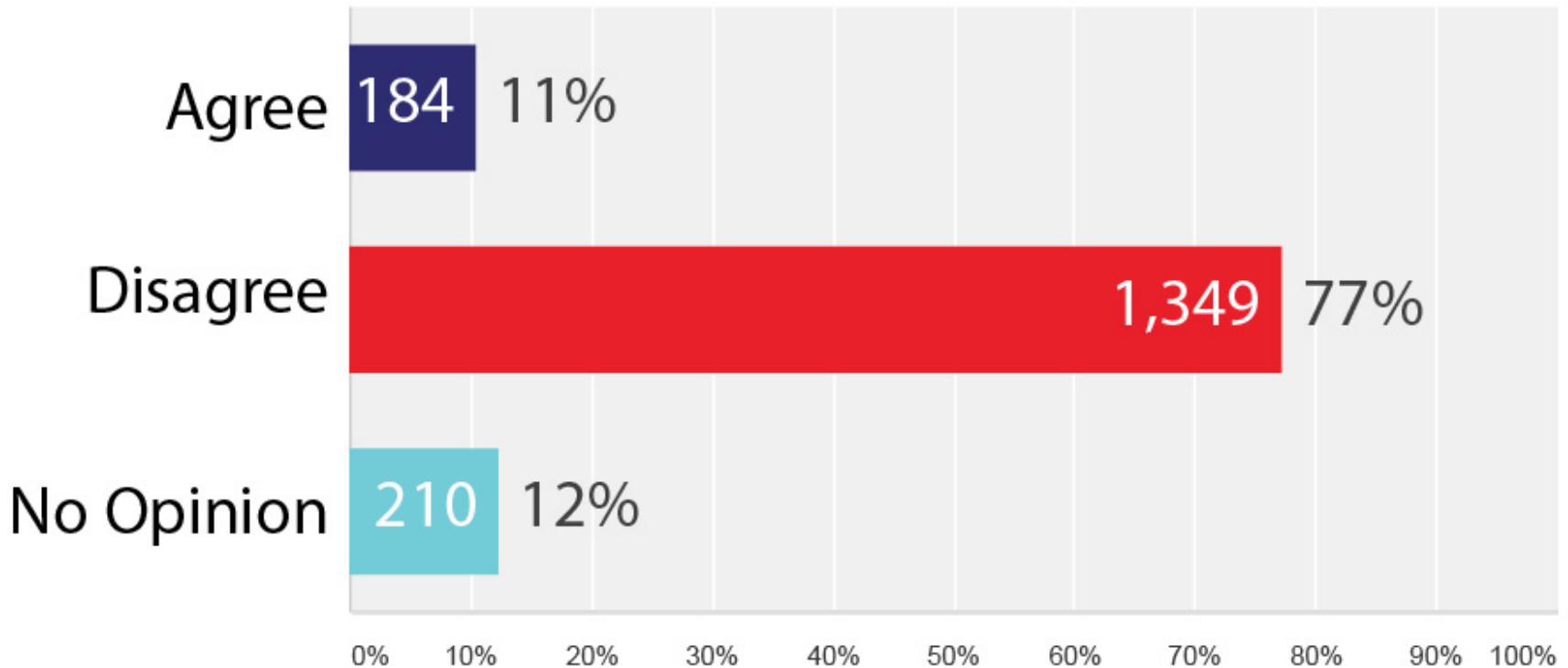
“What prevents you from walking more often?”





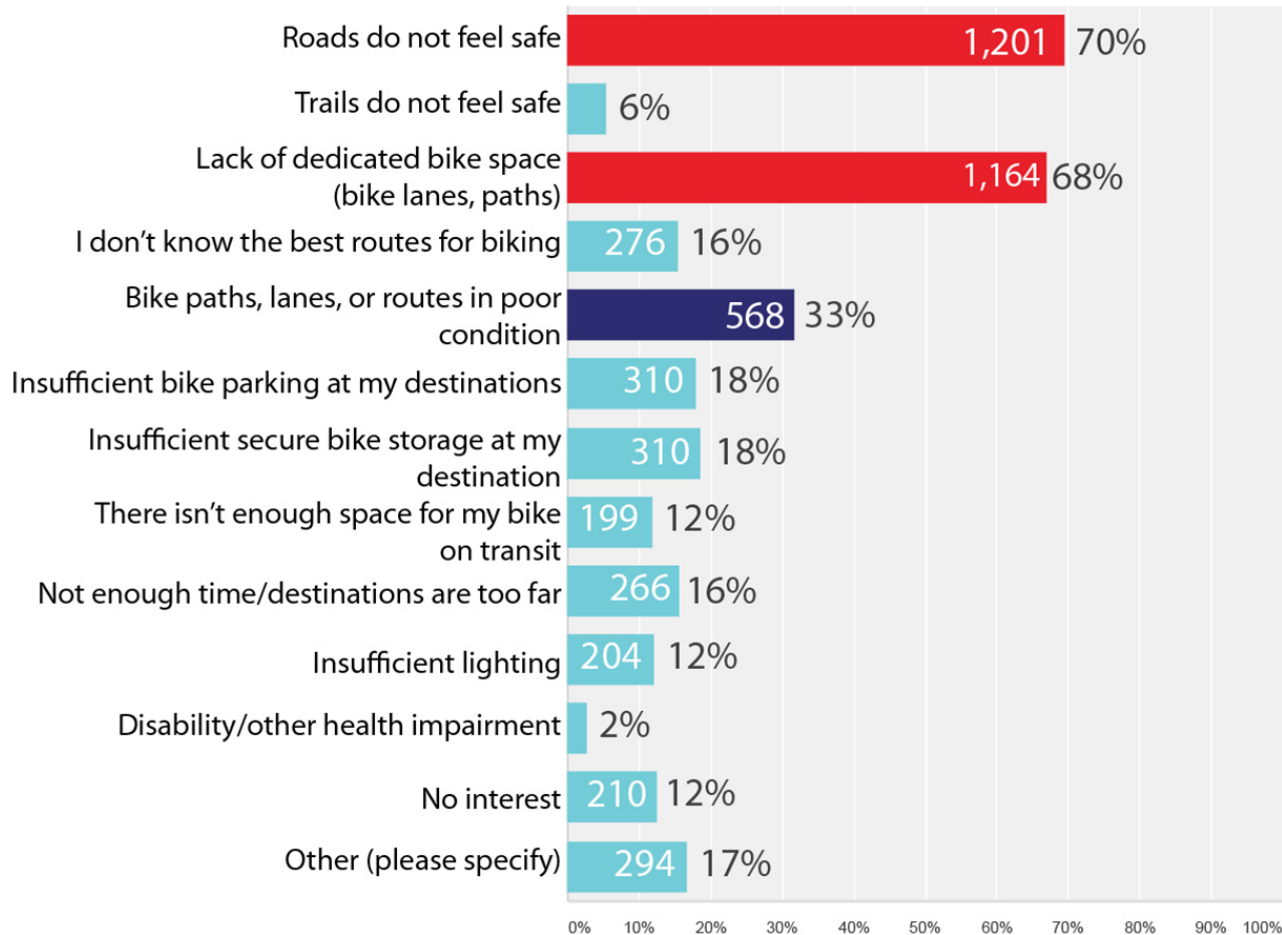
# What We Heard from Survey #1 (1,855 Respondents)

“In Nashville, biking is a safe, convenient, and practical way to get from one place to another”



# What We Heard from Survey #1 (1,855 Respondents)

“What prevents you from biking more often?”



# Community Outreach Strategy

## Outreach Tools

Project Website  
Two Community Surveys  
Interactive Map  
Handlebar and Sidewalk Surveys  
Social Media  
Traditional Media

## Community Meetings

Kickoff Meeting  
Prioritization Meetings  
Open House

## Community Events

Tour de Nash  
Open Streets Nashville  
Pop-Up Events at Parks, Community Centers, Libraries, etc.



# We're Listening!

**150+** Attendees at Public Kickoff Meeting on

**2,994** On-line Map Users

**1,856** Respondents to Survey #1

**1,750** Respondents to Survey #2 (to-date)

**200+** Attendees at Tour de Nash Booth

**300+** Visitors to community meetings, neighborhood association meetings, festivals, and pop-up events

**TOTAL: 7,250**

# We're Listening!

*"I love biking in Nashville and am grateful to live in a city where the government is making walking/biking an infrastructure priority!"*

*"I'd love to walk more and encourage my children to walk more!"*



*"Protected bike lanes are crucial to giving more people confidence in safety."*

*"Access by foot is essential for us as we work, play, and participate in commerce in our neighborhood."*

# Stay Involved!

[www.nashvillewalknbike.com](http://www.nashvillewalknbike.com)



[Home](#)

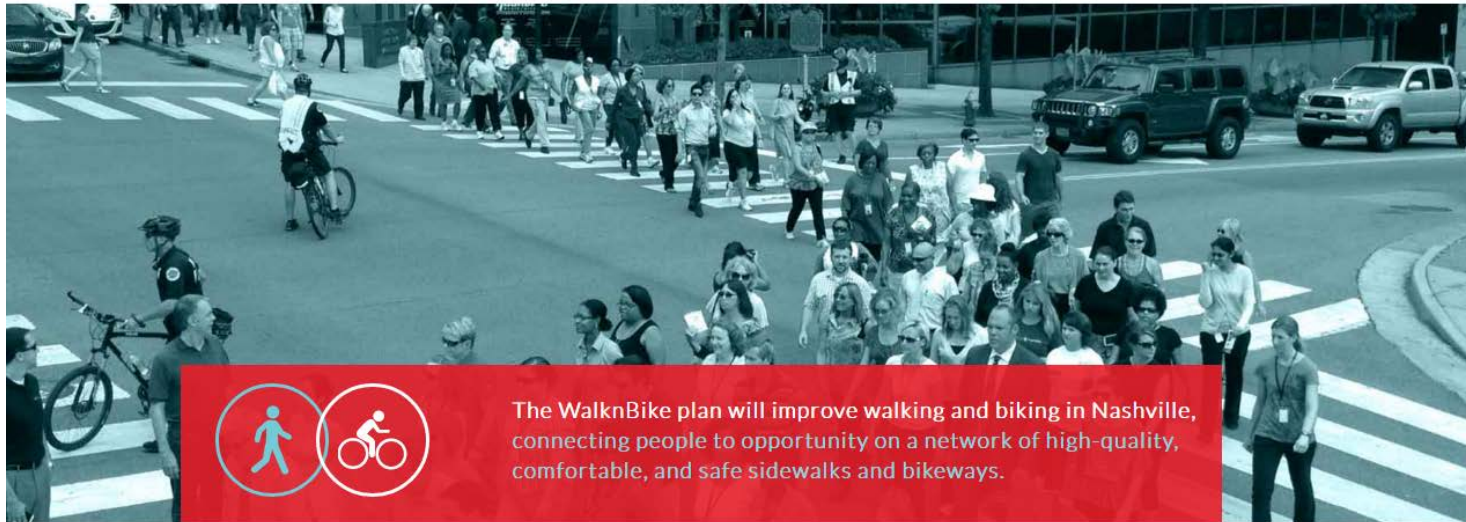
[Get Involved](#)

[Materials](#)

[News](#)

[Contact Us](#)

NASHVILLE-DAVIDSON COUNTY STRATEGIC PLAN FOR SIDEWALKS & BIKEWAYS



The WalknBike plan will improve walking and biking in Nashville, connecting people to opportunity on a network of high-quality, comfortable, and safe sidewalks and bikeways.

Please join us for our  
**PUBLIC KICKOFF MEETING**

Friday  
**April 15th,**  
**12pm-1:30pm**

Nashville Public Library  
615 Church St, Nashville, TN 37219

## Home

"Planning for, building, and maintaining great sidewalks and bikeways are imperative for a healthy, active, safe and vibrant community. I encourage citizens to participate in this process and to work with us to ensure Nashville's sidewalks and bikeways are safe, useable and welcoming to people of all abilities."

— Mayor Barry



**Metro-Nashville**  
**Public Works**  
Improving the Quality of Life for Nashvillians and our Visitors



# Take Our New Survey!

Survey #2 asks  
for additional  
input to help us  
understand  
how to  
prioritize  
improvements  
in our 5-Year  
Strategic Plan



## WalkNBike - 2016 Strategic Plan for Sidewalks and Bikeways Update - SURVEY 2

### Introduction

The Metropolitan Government of Nashville and Davidson County is seeking input on community needs surrounding walking and bicycling. The information gathered from this survey, along with reviews of best practices in other cities, input received on the interactive map, guidance from this plan's Steering Committee, and other inputs will be used to plan and guide investment in sidewalks, street crossings, bikeways, and other pedestrian and bicycle improvements.

We've been listening to your input! Nearly 2,000 of you completed the first survey:

- 83% of respondents say that lack of sidewalks/walkways prevents them from walking more often.
- 70% of respondents say roads currently do not feel safe for biking.

To see the full results of the first survey and hear additional public comments, go to [www.nashvillewalknbike.com/testimonials](http://www.nashvillewalknbike.com/testimonials).

Now we are asking for additional input to help us understand how to prioritize improvements. Please take a moment to complete the following survey which is **the second survey for this project**. Survey should take about 10 to 15 minutes to complete. Your responses will remain anonymous. Please submit only one survey per person.

To learn more about the project and other ways to provide your comments, visit our project website [www.nashvillewalknbike.com](http://www.nashvillewalknbike.com).

Next

# Draw on the Map!

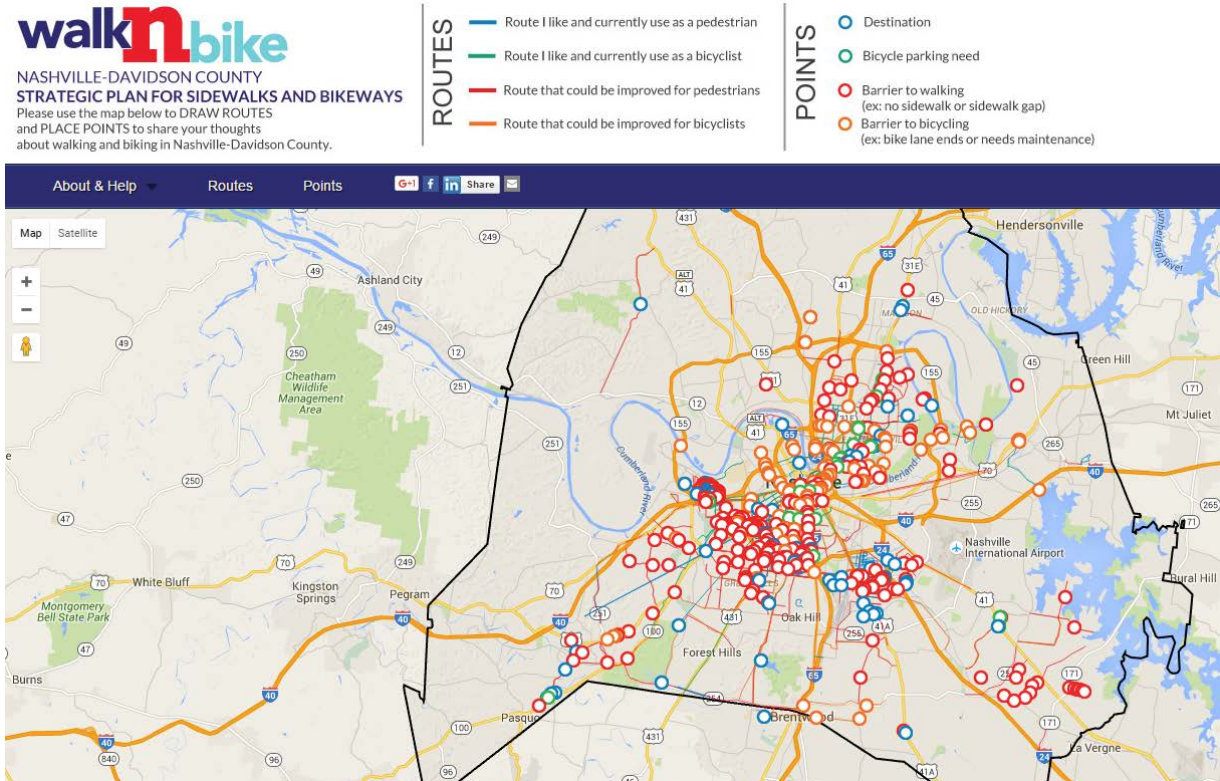
[www.nashvillewalknbike.com](http://www.nashvillewalknbike.com)

2,994 Unique  
Users

1,200 Lines

1,000 Points

2,000+  
Comments



# Request a “WalknBike Talk”!

Help us identify groups to talk to and events to attend!  
Contact us at [Info@nashvillewalknbike.com](mailto:Info@nashvillewalknbike.com)





# Contact Us!

## Project Managers:

**Jenna Smith**

Public Information Manager  
and Projects Manager  
Metro Public Works

**Jason Radinger**

Bicycle & Pedestrian Coordinator  
Metro Public Works

## EMAIL:

[info@nashvillewalknbike.com](mailto:info@nashvillewalknbike.com)

## WEBSITE:

[www.nashvillewalknbike.com](http://www.nashvillewalknbike.com)



@NashWalknBike



#Nashvillewalknbike



facebook.com/  
NashvilleWalknBike

# Current Prioritization Factors

## DESTINATIONS



Located near a  
Park or  
Greenway



Located near  
Public or  
Section 8  
Housing



Located near a  
Library or  
Civic  
Building



Located near a  
Community  
Center



Located near  
Senior Housing  
or an Assisted  
Living Facility



Located near a  
Hospital

## SCHOOLS



Located near a  
Public  
Elementary or  
Middle School



Located near a  
Private  
Elementary or  
Middle School



Located near a  
Public  
High School



Located near a  
Private  
High School



Located near a  
College or  
University

# Current Prioritization Factors

## LAND USE



Located In an  
Natural  
Transect Zone  
(T1)



Located In a  
Rural Transect  
Zone (T2)



Located In an  
Suburban  
Transect  
Zone (T3)



Located In an  
Urban  
Transect Zone  
(T4)



Located In a  
Downtown or  
Center Transect  
Zone (T5 or T6)



Located near a  
Neighborhood  
or Commercial  
Center



Located Inside the  
Urban  
Services  
District



Located In an  
Industrial  
or Medical  
District

## TRANSPORTATION



Located near a  
Transit  
Route



Located along a  
Rural  
Arterial  
Street



Located along an  
Urban  
Arterial  
Street



Located along a  
Collector  
Street